

New Zealand



New Zealand is situated southeast of **Australia** and consists of two large islands: **North** and **South**. The islands were discovered by a Dutch explorer Abel **Tasman** in 1642. So it was a Dutch colony and later Captain James **Cook** claimed the country for Great Britain in 1769. New Zealand was named after a part of Holland – Zealand. The capital is **Wellington**. Another major city is **Auckland** and **Christchurch**. The original inhabitants are the **Maouris** who were originally cannibals of Polynesian origin. New Zealanders are called **kiwis**. The favorite sport is **rugby**.

The country is hilly and picturesque with rocks, volcanoes, hot springs, mud pools and geysers. The characteristics of the New Zealand are evergreen forest with warm climate. The highest peak is Mt. **Cook** (3 764m). Almost all the rivers are short and most of them run swiftly to the sea. The largest lake is Taupo in the North Island. The flag is very similar to the Australian one with Southern Cross and Union Jack.

Typical animals (*št. Zapiši pod ustrezno žival*)

kiwi (1), brown emu (2), Kakapo parrot (3), albatrosses (4), largest insect weta (5) and tuatara (6).



3



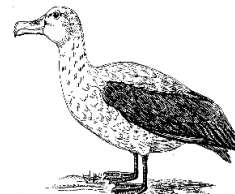
5



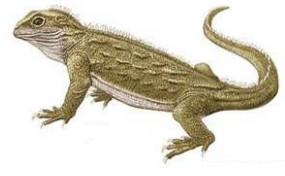
2



1



4



6

Famous New Zealanders (*poveži*)

Sir Edmund Hillary

Bruce McClaren

Kiri Te Kanawa

Russell Crowe

Jean Batten

movie actor

the first woman to fly between England and Australia

opera singer

motor racer

the first men to climb Mount Everest

Film makers often use the countryside for making films, the Oscar winning film Lord of the Rings was shot there. New Zealand was the first country in the world in 1893 to give women the right to vote.

In New Zealand you can find unique kinds of plants and animals, which do not grow and do not live anywhere in the world. About a quarter of the land is forested in areas which are largely protected from commercialisation in national parks.